

The reach and mobility are clearly superior



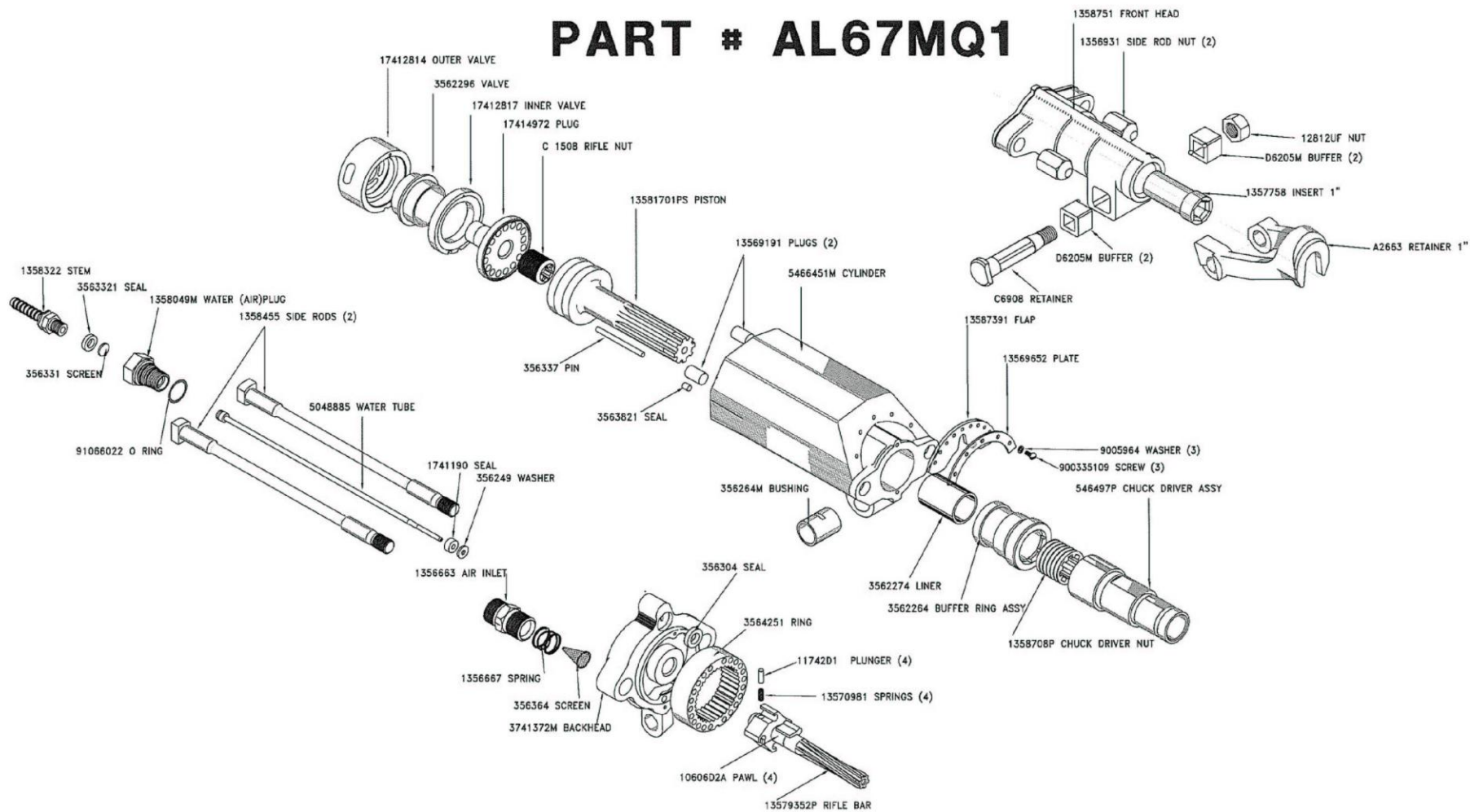


Pneumatic Drifter

SAL67M

		Rotation	Cylinder Bore	Cylinder Stroke	Chuck Size		Mach. Weight	Air Consumption
SAL67M		1 in 30 Upstroke	3 1/4" 82.5mm	2 1/2" 63.5mm	1" or 7/8" hex 4 1/4"		101 lb 45.7kg	228 cfm @ 90 psi

PART # AL67MQ1





The Quick Disconnect feature is designed into this models as well

Both the pneumatic and hydraulic attachments can be connected and disconnected in just a few minutes with fewer tools required than by any of our competitors. This makes it a perfect rental unit



The Hydraulic Controls for Swing and Feed are accessed easily from the side of the Feed.



The Excavator Version includes a feed Swing to allow 20 degree swing left and right

The angle on the backhoe version can be Adjusted with the outriggers

To assure maximum versatility the 20 degree swing is standard on the excavator model